

# Trip Report, League of Naturalists

7/20/03 Goose Pond Mountain Butterfly Walk or “The Search for the Olive Hairstreak”.

**Led by:** John Yrizzary.

**Participants:** Barry Babcock, Joe Cullen, Jack Focht, Ken McNichol, Alan Wells, Della Wells, Mary Yrizzary.

**Location:** Met at the parking area along Route 17M at 9 AM. Hiked up Lazy Hill Road and then returned through fields. Trip ended at 1:45 PM.

**Weather:** Mid to high 70s, scattered clouds. Very pleasant!

**Highlights:** Limestone rock outcrop with Walking Fern, Marginal Wood Fern and Wild Ginger! Surprisingly few mosquitoes and *No* Olive Hairstreaks!!

John’s Proposal:

\*\*\* **BOUNTY HUNTERS** \*\*\*

- \$1,000 fine for digging plants, archaeological sites, poaching, etc. within the Park
- \$500 of the fine goes to informant with proof leading to conviction

Who is willing to contribute \$1,000 to get the program started?

*The proposal is too late to save Goose Pond Mountain Park from despoilers who have collected its Showy Orchids, Walking Ferns and archeological treasures. But, as the only Park in the Palisades with a significant limestone area, it should be properly managed as a botanical park and restored.*

(High resolution photos available upon request.)



**Photo 1.** Our intrepid guide.



**Photo 2.** Some of the LON group at Goose Pond Mtn..

**Misc. Invertebrates**

Praying Mantis  
Several species of grasshopper and katydid  
Milkweed Beetle  
White-faced hornet



**Photo 3.** Eastern Pond Hawk, female.



**Photo 4.** *Sympetrum* sp., White-faced Meadow Hawk?

**Odonata**

Ebony Jewelwing  
UNID Spreadwing  
UNID Damselflies (several species)  
UNID Darner (1)

UNID Cruiser (?) (1)  
 Black Saddlebags (1)  
 Eastern Amberwing (1)  
 Halloween Pennant (1)  
 Common Whitetail (common)  
 Widow Skimmer (common)  
 Blue Dasher (several, females only)  
 Eastern Pond Hawk (1 female)  
*Sympetrum* sp. (White-faced/Cherry-faced/Ruby) complex (common)



**Photo 5.** American Copper (underside).



**Photo 6.** American Copper (upperside).

**Butterflies**

Black Swallowtail (1)  
 Eastern Tiger Swallowtail (several)  
 Cabbage White (common)  
 Clouded Sulphur (1)  
 Orange Sulphur (1)  
 American Copper (2)  
 Great Spangled Fritillary (common)  
 American Lady (1)  
 Red-spotted Purple (1)  
 Northern Pearly-Eye (common)  
 Appalachian Brown (1)  
 Little Wood Satyr (several)  
 Common Wood Nymph (very common)  
 Monarch (ca. 6)  
 Silver-spotted Skipper (common)  
 Least Skipper (1)  
 European Skipper (several)  
 Crossline Skipper (several)  
 Little Glassywing (1)  
 Delaware Skipper (several)  
 Mulberry Wing (very common in wetland sedges)  
 Black Dash (1)  
 Dun Skipper (several)

## **Reptiles & Amphibians**

Wood Frog (disappeared into grass)  
American Toad (disappeared into grass)  
Garter Snake (unperturbed by our presence)

## **Birds**

Northern Flicker  
Downy Woodpecker  
Eastern Wood Pewee  
Blue Jay  
American Crow  
Black-capped Chickadee  
Tufted Titmouse  
White-breasted Nuthatch  
American Robin  
Wood Thrush  
Eastern Bluebird (adults and young)  
Cedar Waxwing  
Red-eyed Vireo  
Prairie Warbler  
Common Yellowthroat  
Scarlet Tanager  
Northern Cardinal  
Rose-breasted Grosbeak  
Indigo Bunting (Common, singing)  
American Goldfinch  
Eastern Towhee  
Field Sparrow

## **Mammals**

Eastern Chipmunk

## **Fungi**

Slime mold (looked like a dead Cheese-doodle or maybe a melted Peep!)  
Several unidentified fungi

## **Plants**

<i>Thelypteris palustris</i>	Marsh Fern
<i>Asplenium rhizophyllum</i>	Walking Fern
<i>Dryopteris marginalis</i>	Marginal Wood Fern
<i>Onoclea sensibilis</i>	Sensitive Fern
<i>Juniperus virginiana</i>	Eastern Red Cedar
<i>Liriodendron tulipifera</i>	Tulip Tree
<i>Asarum canadense</i>	Wild Ginger
<i>Juglans nigra</i>	Black Walnut
<i>Quercus bicolor</i>	Swamp White Oak
<i>Quercus palustris</i>	Pin Oak
<i>Betula alleghaniensis</i>	Yellow Birch
<i>Carpinus caroliniana</i>	Ironwood
<i>Dianthus armeria</i>	Deptford Pink
<i>Stellaria graminea</i>	Common Stitchwort, Starwort
<i>Tilia americana</i>	Basswood
<i>Malva moschata</i>	Musk-Mallow

<i>Hypericum perforatum</i>	Common St. Johnswort
<i>Hypericum punctatum</i>	Spotted St. Johnswort
<i>Alliaria petiolata</i>	Garlic Mustard
<i>Agrimonia parviflora</i>	Agrimony
<i>Gleditsia triacanthos</i>	Honey-Locust
<i>Lotus corniculata</i>	Bird's-Foot Trefoil
<i>Melilotus albus</i>	White Sweet-Clover
<i>Melilotus officinalis</i>	Yellow Sweet-Clover
<i>Vicia cracca</i>	Cow-Vetch
<i>Rhamnus cathartica</i>	Common Buckthorn
<i>Staphylea trifolia</i>	Bladdernut
<i>Toxicodendron radicans</i>	Poison Ivy
<i>Oxalis violacea</i>	Violet Wood Sorrel (top of Goose Pond Mtn.)
<i>Angelica atropurpurea</i>	Purple-Stem Angelica
<i>Daucus carota</i>	Queen Anne's Lace
<i>Asclepias incarnata</i>	Swamp Milkweed
<i>Asclepias syriaca</i>	Common Milkweed
<i>Cynanchum louiseae</i>	Black Swallow-wort
<i>Convolvulus arvensis</i>	Field Bindweed
<i>Verbena hastata</i>	Blue Vervain
<i>Leonurus cardiaca</i>	Motherwort
<i>Monarda fistulosa</i>	Wild Bergamot
<i>Syringa vulgaris</i>	Lilac
<i>Linaria vulgaris</i>	Butter-and-Eggs
<i>Mimulus ringens</i>	Common Monkeyflower
<i>Verbascum thapsus</i>	Mullein
<i>Galium mollugo</i>	White Bedstraw
<i>Lonicera morrowii</i>	Fly Honeysuckle
<i>Achillea millefolium</i>	Common Yarrow
<i>Centaurea jacea</i>	Brown Knapweed
<i>Cichorium intybus</i>	Chicory
<i>Cirsium arvense</i>	Canada Thistle
<i>Tragopogon pratensis</i>	Yellow Goat's-Beard
<i>Acorus americanus</i>	Sweetflag
<i>Carex lurida</i>	Sedge
<i>Scirpus</i> sp.	Bulrush
<i>Bromus inermis</i>	Smooth Brome
<i>Dactylis glomerata</i>	Orchard Grass
<i>Microstegium vimineum</i>	Japanese Stiltgrass
<i>Phalaris arundinacea</i>	Reed Canary-Grass
<i>Phleum pratense</i>	Timothy
<i>Allium vineale</i>	Field Garlic



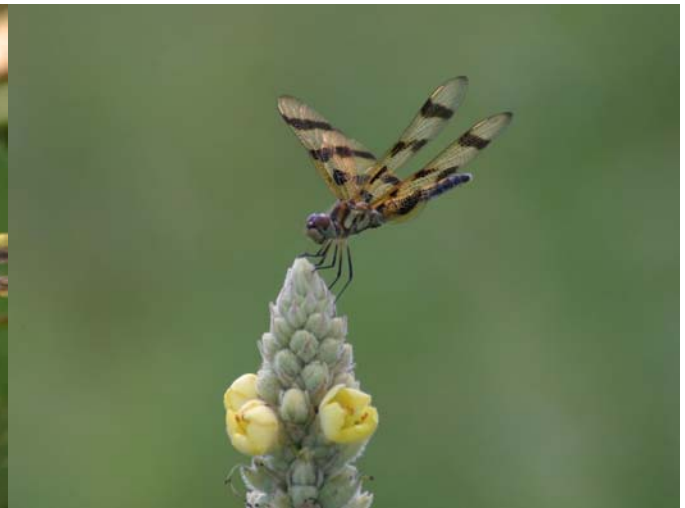
**Photo 7.** Common Wood Nymph.



**Photo 8.** Northern Pearly-Eye.



**Photo 9.** Mulberry Wing.



**Photo 10.** Halloween Pennant.